

Mendota DXV60 and DXV45 Deep Timber Log Installation Guide

**COMPLETED LOGS AND COAL BED ASSEMBLY EVALUATION**

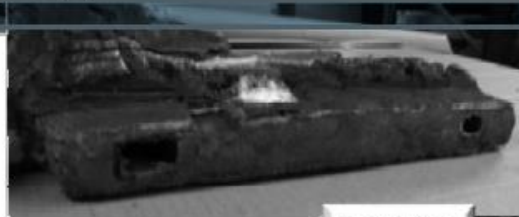
See the picture, shown below. This picture shows the recommended log positions. Slight variations in the position of each log is allowed. However, if any log position is significantly out of position in comparison to the diagram below and if any flames are floating off the burner surface after 10 minutes of starting the fireplace, turn off the fireplace and contact your installer or fireplace dealer. Have the Installer/Dealer adjust the log positions and also conduct a thorough evaluation of the venting configuration to make certain that the venting configuration conforms to Mendota's venting requirements, listed in this Installation and Operations Manual.



## DXV45/60 Log Placement



1. Burn fireplace for 1 minute to cure burners. Turn off gas to fireplace.
2. Paint front burner tube with high temperature black paint.



LOG "C"

3. Locate Log "C". Back left log.
4. Locate holes on bottom of log.

5. Place log "C" onto the 2 left pins behind the rear burner as shown.
6. Do not push down at this time



KNOB on LOG "C"

7. Locate KNOB on Log "C" as shown.
8. If knob interferes with log "C" sitting directly on the air box, trim off knob with utility knife. This will allow log to push down onto the pins and set directly on the airbox. Make sure there is no air space directly under this log.

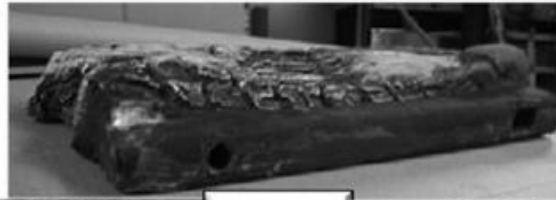
9. While pushing log "C" down, put your fingers behind the top of log "C" to get a slight angle forward of about 10 degrees.



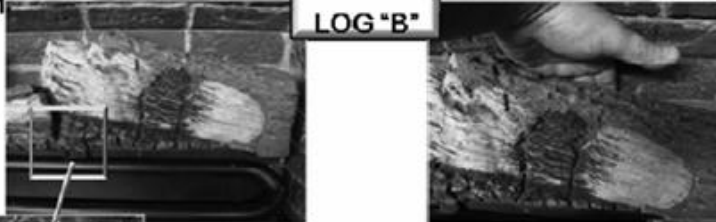
10. Log "C" installed correctly as shown.



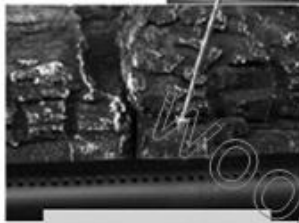
11. Locate Log "B". Back right log.
12. Locate holes on bottom of log.
13. Place log "B" onto the 2 left pins behind the rear burner as shown.



14. Do not push down at this time



15. Locate KNOB on Log "B" as shown.
16. If knob interferes with log "B" sitting directly on the air box, trim off knob with utility knife. This will allow log to push down onto the pins and set directly on the airbox. Make sure there is no air space directly under this log.

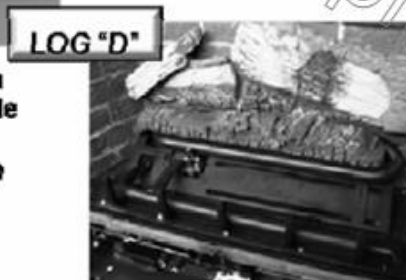


17. While pushing log "B" down, put your fingers behind the top of log "B" to get a slight angle forward of about 10 degrees.



18. Locate Log "D". This log will be installed between the front and back of the rear burner tube as shown below.
19. Locate bottom of log "D".

20. Log "D" will push up to the right side so it will but up against the inside curve of the rear burner tube.

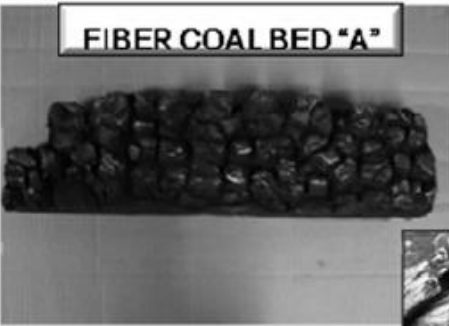


Push log "D" up to inside curve of burner.

21. Log "D" will be tipped slightly forward to a maximum of a 10 degree angle. Log "E & F" will hold log "D" in place in later steps.







22. Locate Fiber Coal Bed "A". This Fiber Coal Bed will be installed between the front burner and the front of the rear burner tube as shown below.

23. The Fiber Coal Bed "A" is placed directly behind the front burner. The Coal Bed should be level with the top and but right up against the backside of the front burner tube.

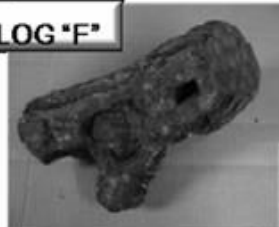


24. Slide Fiber Coal Bed "A" to the left as far as possible. Make sure you have a minimum of 3/8" between the thermocouple and coal bed. If not slide coal bed to right.



25. Locate Log "F". Then locate the hole in the bottom of the log.

26. Log "F" will be installed on the right side of the fireplace, with the hole on the bottom of the log setting on the right pin in log "D".



27. The front end of log "F" will be resting to the right end of the front burner tube as shown.



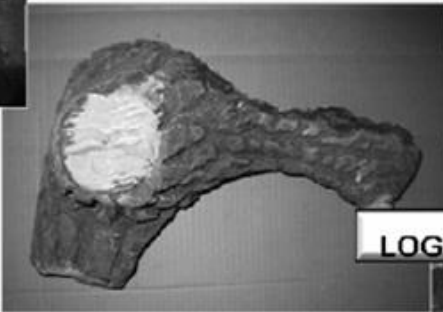
Log "F" position on front burner



Large Diameter Coals

30. Log "E" will be installed on the left side of the fireplace, with the hole on the bottom of the log setting on the left pin in log "D".

28. Locate large diameter coals. Place several large coals to the left side of the burner tube coming from the pilot light to the front burner.

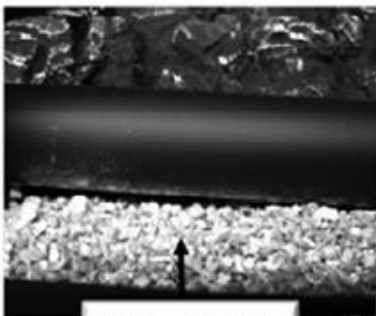


29. Locate Log "E". Then locate the hole in the bottom of the log.

31. The front end of log "E" is notched. The notch will be resting on the left end grate bar.



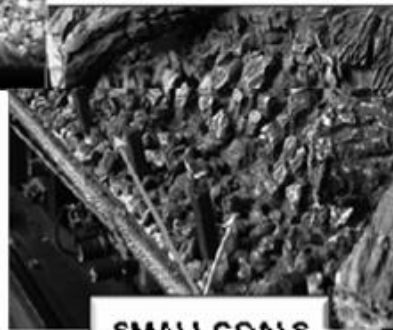
Log "E" position on front grate



VERMICULITE

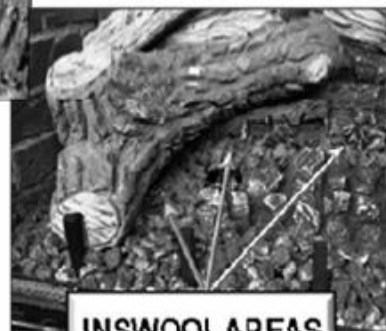
32. Place vermiculite in front of front burner. Only bring vermiculite level to BOTTOM of front burner. Save a little vermiculite for final cosmetics.

33. Place small coals over vermiculite. Bring small coals above and over top of front burnertube and gas ports in a single layer. Small coals should not extend back more than 1" behind front burnertube. DO NOT cover gas ports on top side of burner with vermiculite.



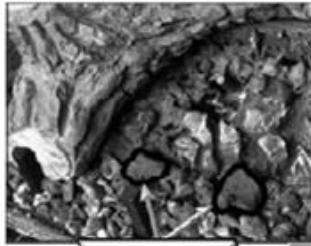
SMALL COALS

34. Put inswool on burnertube that comes straight down from the pilot. Bridge inswool over large coals to burner ports. Also, bridge inswool over middle burnertube, between Coal Bed "A" and Log "D". Make sure inswool is torn in small thin pieces, the size of a dime or smaller and put in a single layer.



INSWOOL AREAS





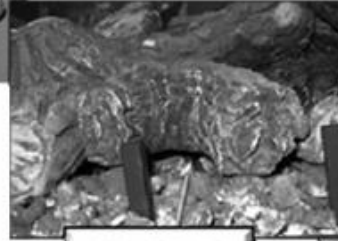
COALS

35. Place TWO large diameter coals on Fiber Coal Bed "A" as shown in the picture. These coals are placed in this specific location to support log "H".



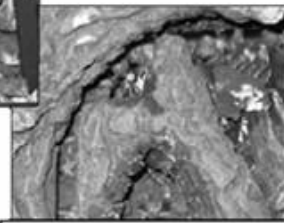
LOG "H"

36. Locate Log "H". Log "H" will sit directly onto the two large coals just installed. The "Y" ends of the log sit on the two large coals.



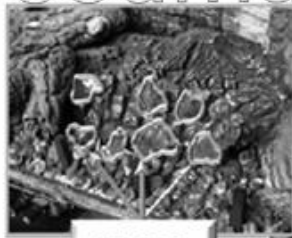
AIR SPACE

37. The back of the log "H" is notched to display pilot light as shown. Log "H" is raised up on the two large coals to allow air and gas to flow freely. This results in more flames and glowing in this area while concealing the pilot light.



LOG "H" POSITION

woodmanspartsplus.com



COALS

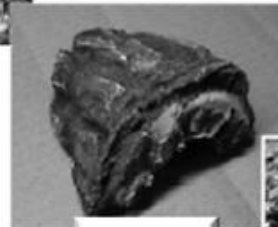
38. Place large diameter coals on Fiber Coal Bed "A" as shown in the picture. Coals are placed with a 3/8" minimum space between coals. Leave area as shown with no coals, as back of log "I" will sit there.



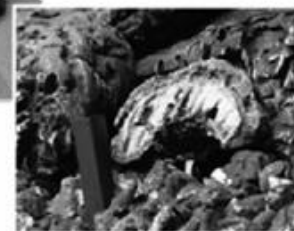
TWO COALS

39. Place TWO large diameter coals on Fiber Coal Bed "A" as shown in the picture. These coals are placed in this specific location to support log "I".

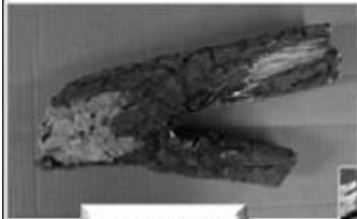
40. Locate Log "I". Log "I" will sit directly onto the two large coals just installed. The front end of the log will sit on the two large coals as shown. The back of log "I" will sit directly on Fiber Coal Bed "A". Having log "I" raised up on the two large coals, allows air and gas to flow freely. This results in a cave affect that glows and flames that will come out front of log "I".



LOG "I"

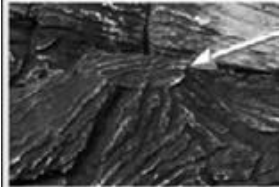


LOG "I" POSITION



LOG "G"

41. Locate Log "G". The top of log "G" is the "Y" portion of the log.



KNOT ON LOG

"D"

42. The right branch of the "Y" log will sit on the knot on log "D".



LOG "G" GRATE

POSITION

43. The bottom of log "G" will sit on the 2<sup>nd</sup> grate bar from the right side as shown. The grate bar will hold the log up allowing gas and air to circulate.



LOG "G" POSITION



Left Side

Coals

44. Place remaining small and large coals on right and left side of fireplace floor. This is for cosmetics only.



INSWOOL

45. Bridge burner tube area in a thin layer of inswool as shown. Make sure inswool is torn in small thin pieces, the size of a dime or smaller. DO NOT pack inswool in place. Inswool should be dropped in place as this

will keep the inswool fluffy and let air and gas circulate thru creating a realistic fire.

46. Place a small amount of inswool and vermiculite over the small coals for cosmetics. NEVER install vermiculite behind the front burner tube or on Fiber Coal Bed "A".



Right Side

Coals



FINAL LOG PATTERN